

PART OF THE NE. 1/4, OF SECTION 27, T.7N., R.1E., S.L.B. & M.
THE RIDGE TOWNHOMES PHASE 4

374

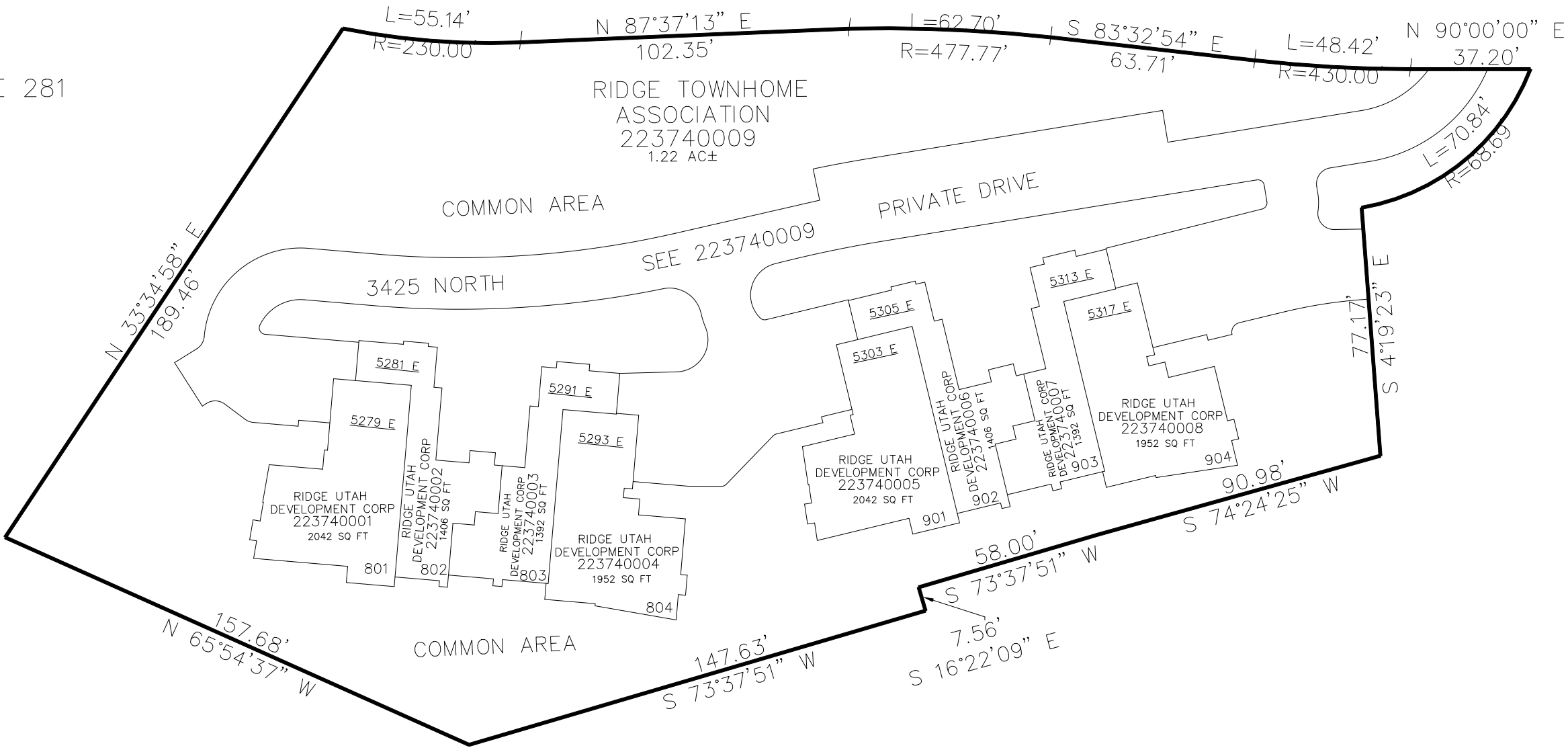
TAXING UNIT: 203

IN WEBER COUNTY
SCALE 1" = 40'

SEE PAGE 281

MOOSE HOLLOW DRIVE

SEE PAGE 281



SEE PAGE 281

*ADDRESS AFFIDAVIT E#3030599

10' UTILITY & DRAINAGE EASEMENTS EACH
SIDE OF PROPERTY LINES AS INDICATED
BY DASHED LINES EXCEPT AS OTHERWISE
SHOWN.

FOR COMPLETE ENG DATA SEE
ORIGINAL DEDICATION PLAT IN
BOOK 86, PAGE 62-65 OF RECORDS.